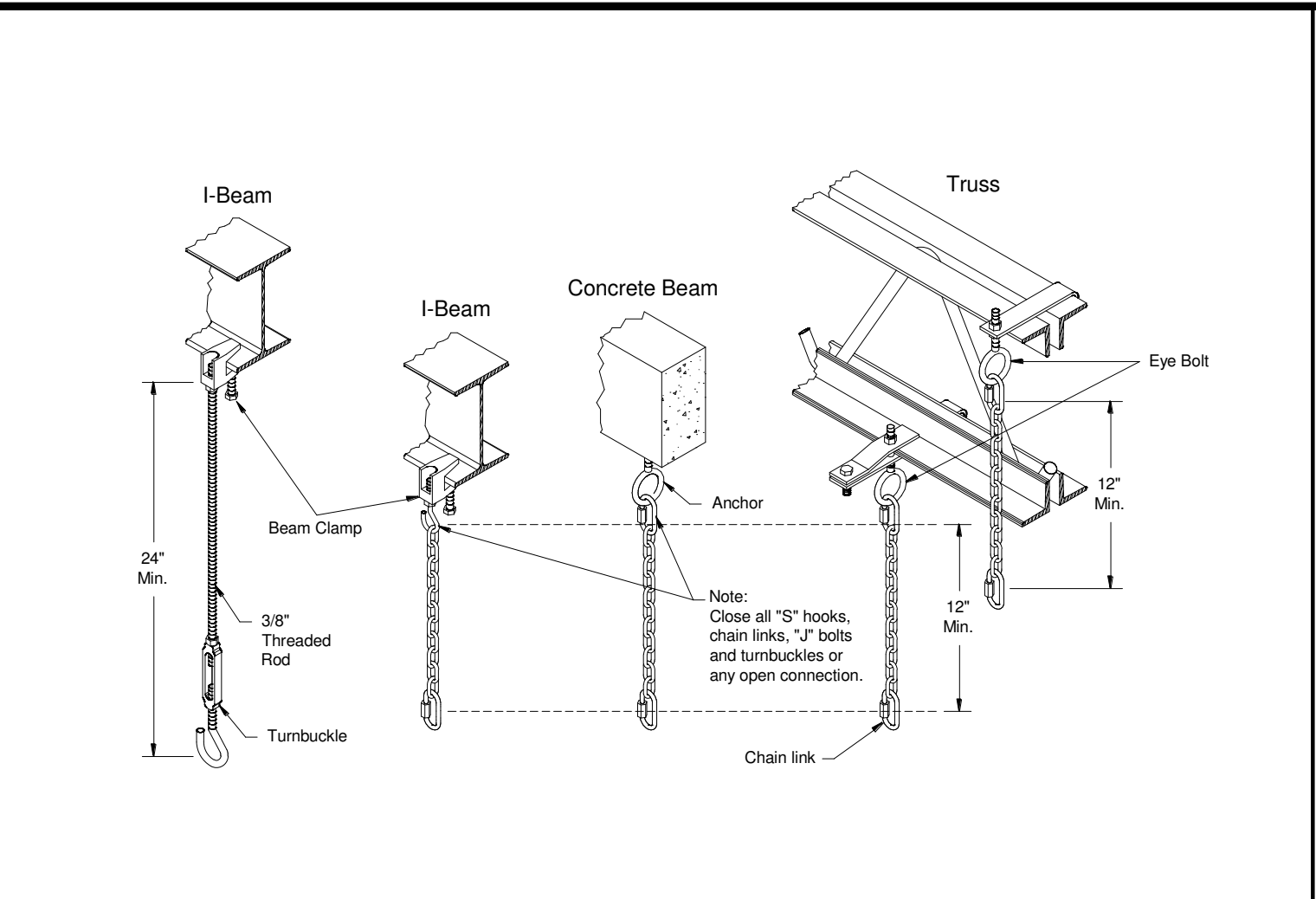
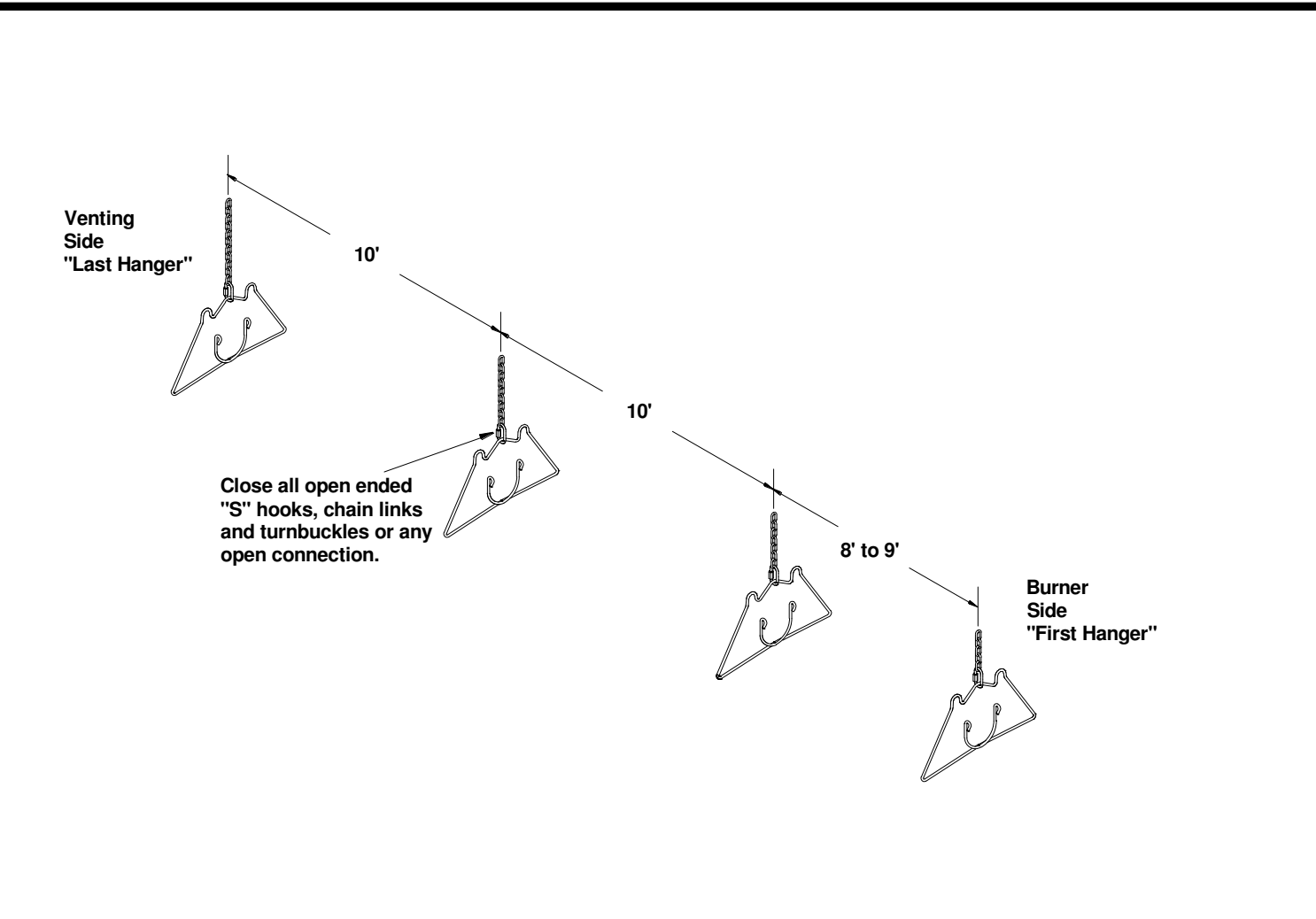


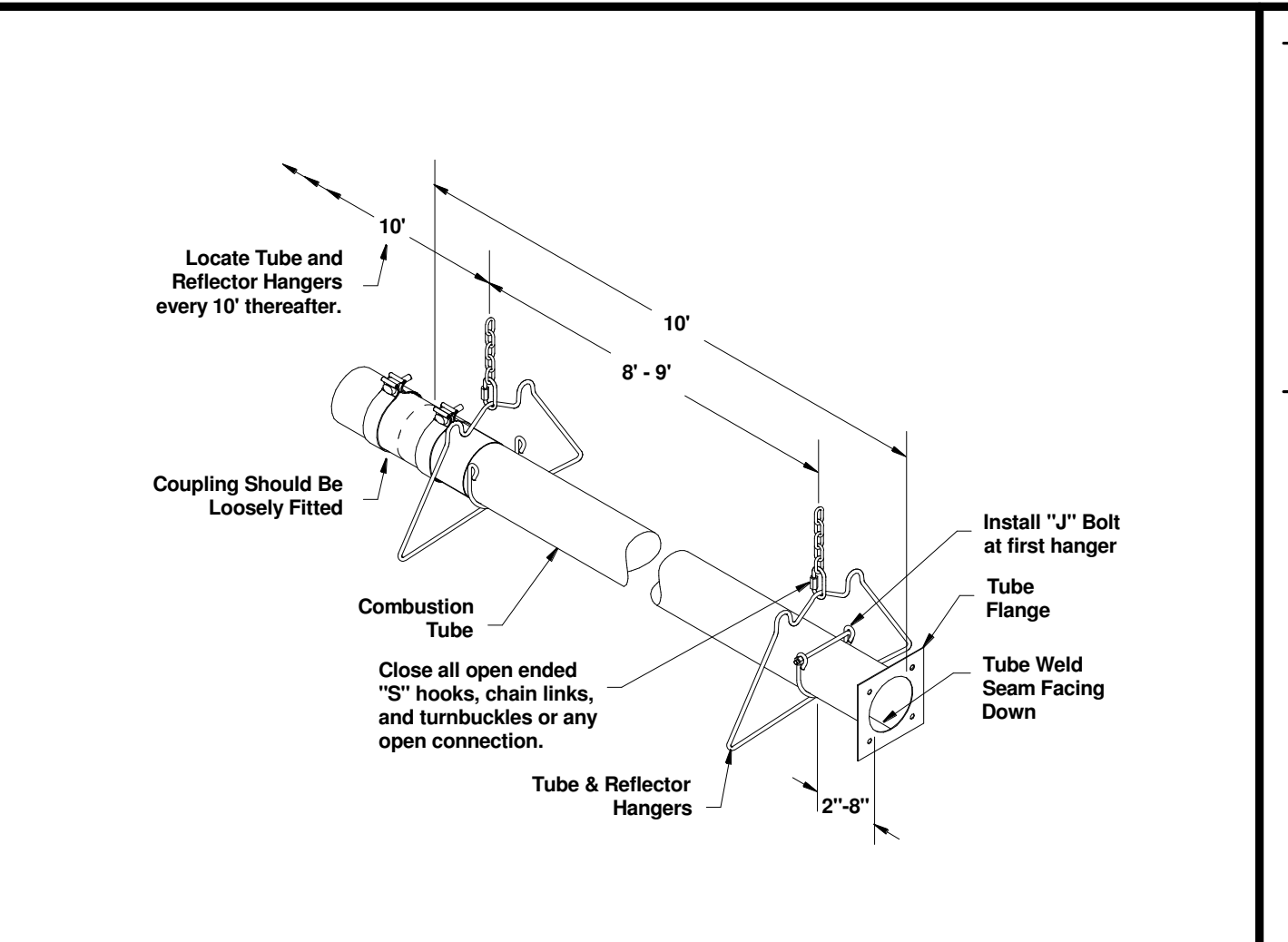
**A GENERAL INSTALLATION DETAIL** NO SCALE



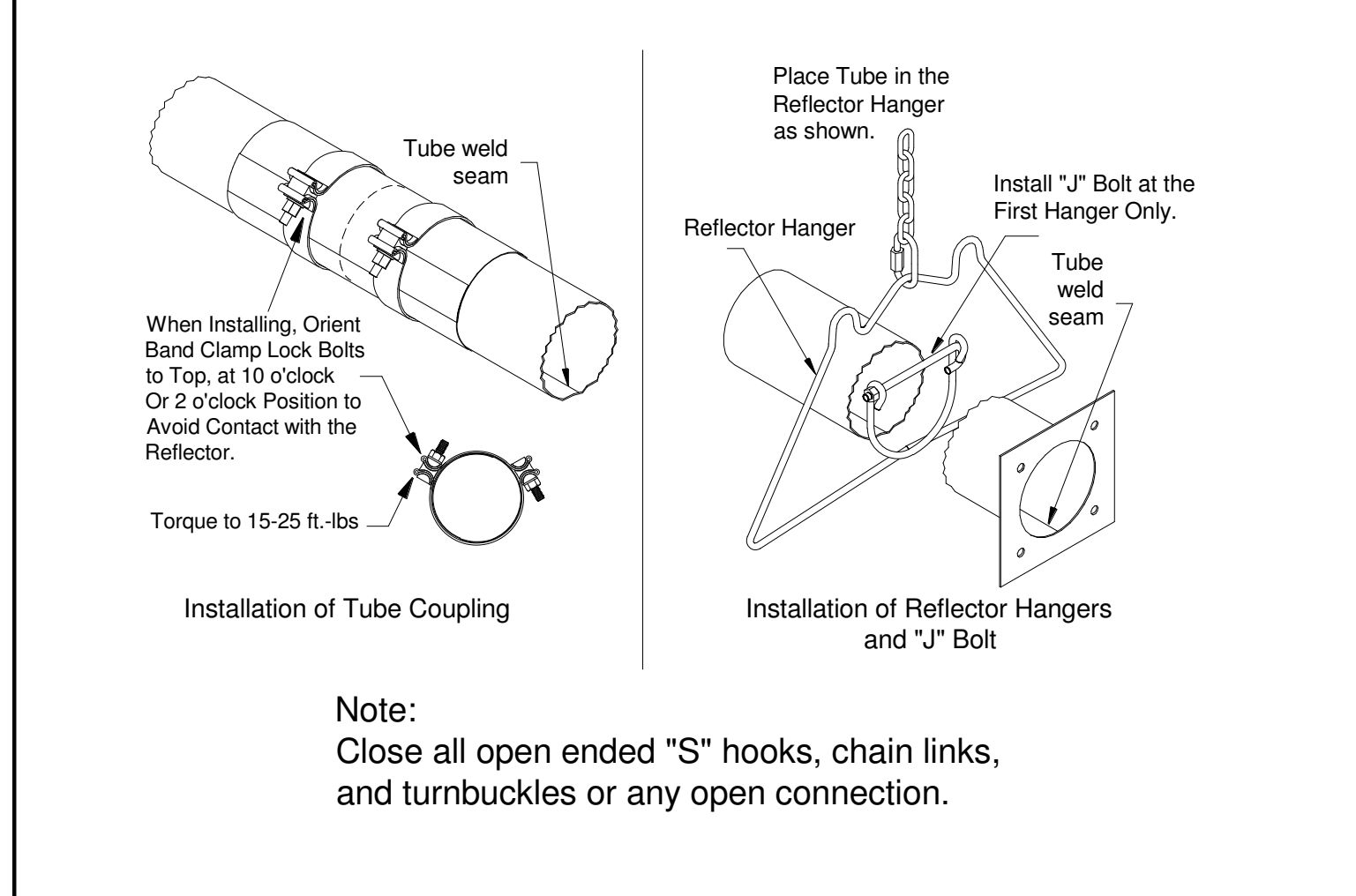
**B SUSPENSION MECHANISM** NO SCALE



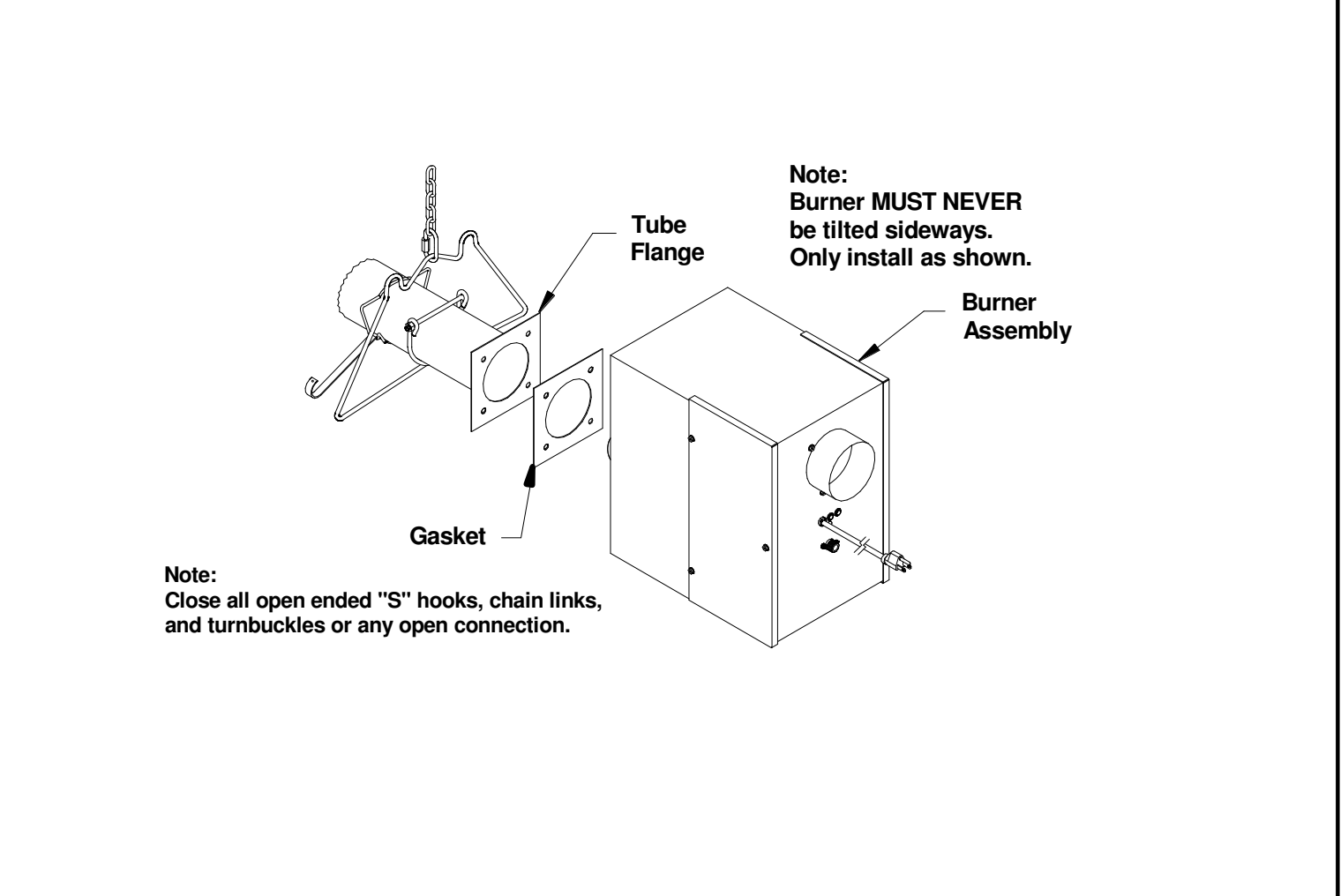
**C HANGING POINTS** NO SCALE



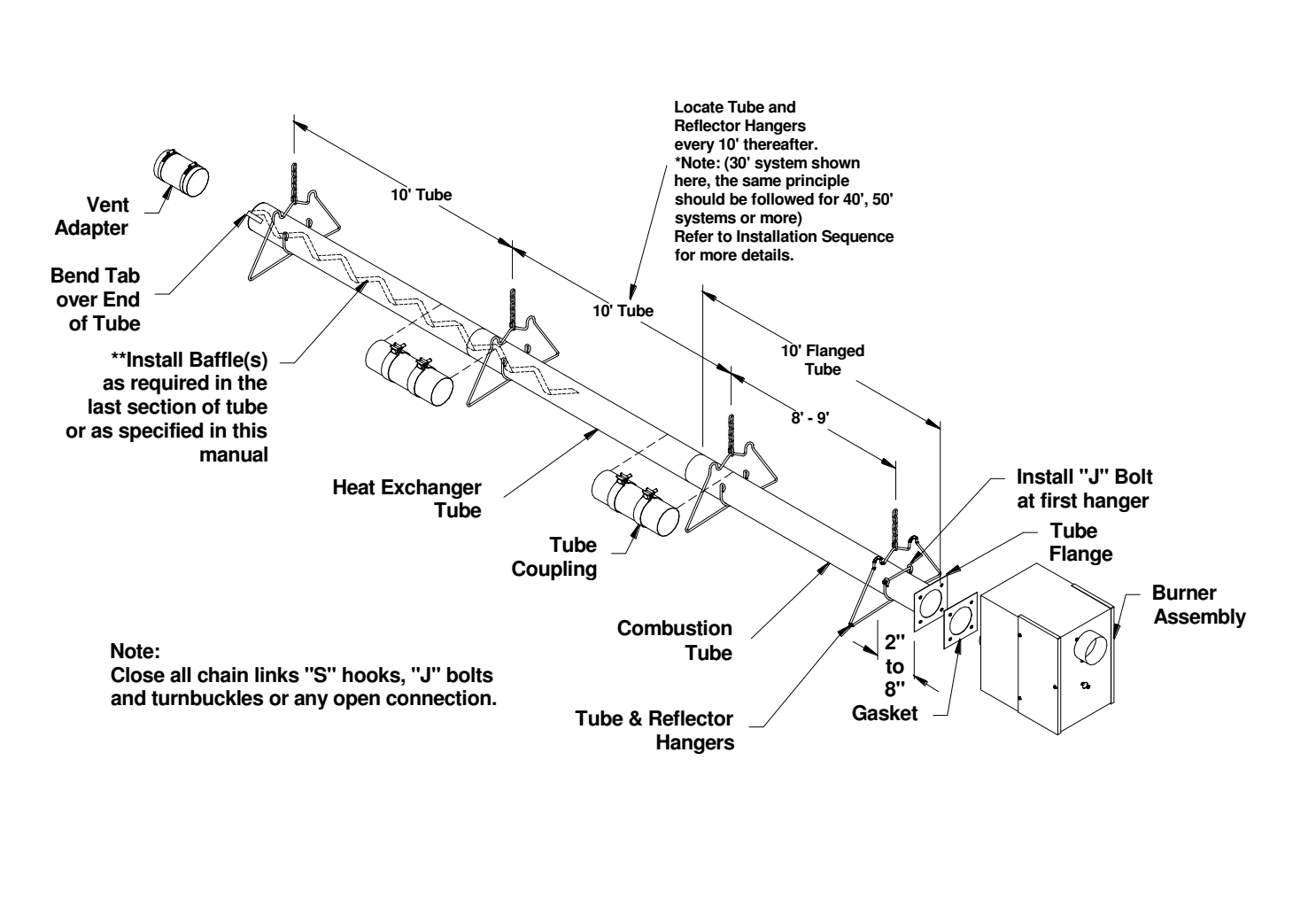
**D FIRST SECTION INSTALLATION** NO SCALE



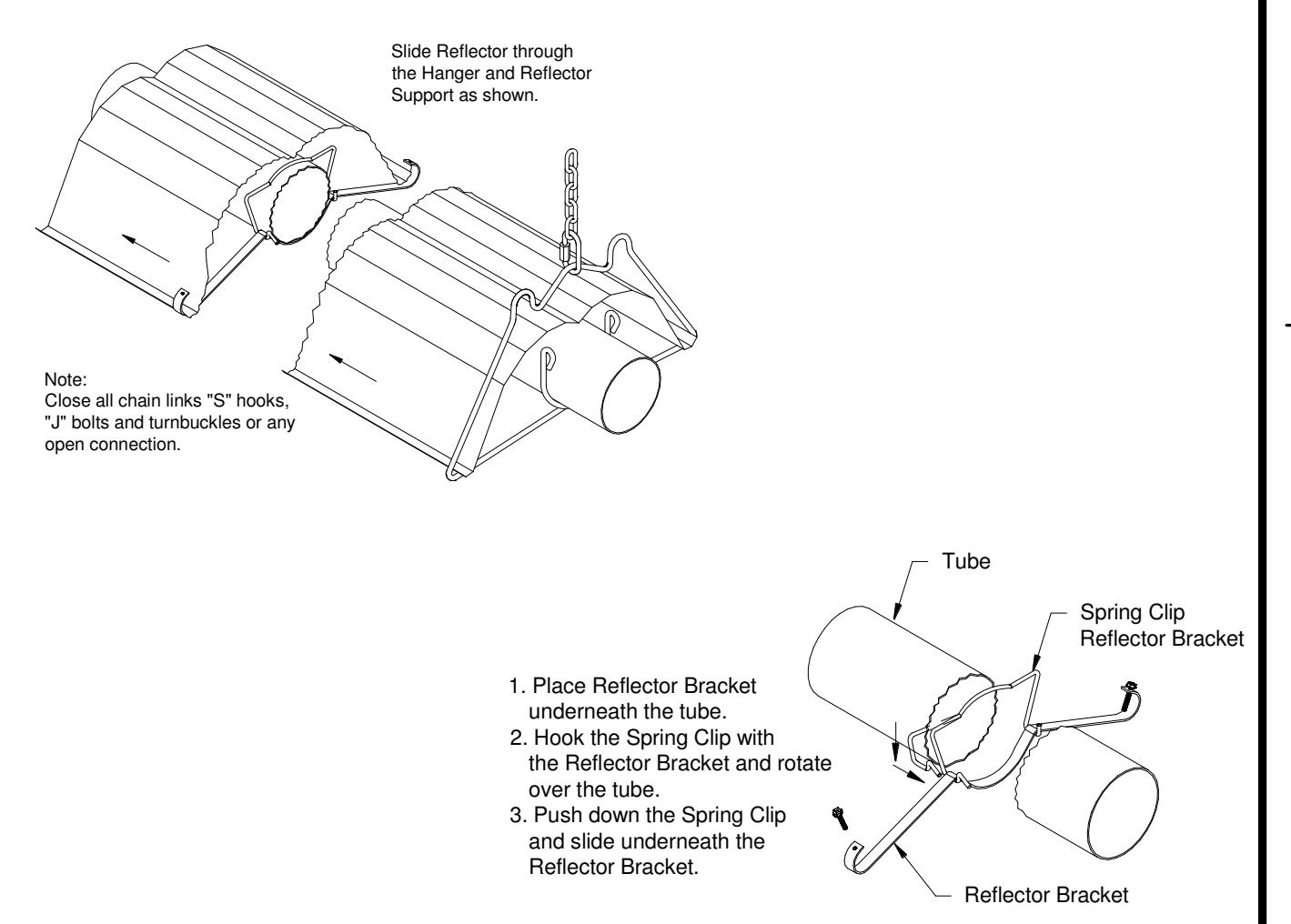
**E 'J' BOLT AND COUPLING INSTALLATIONS** NO SCALE



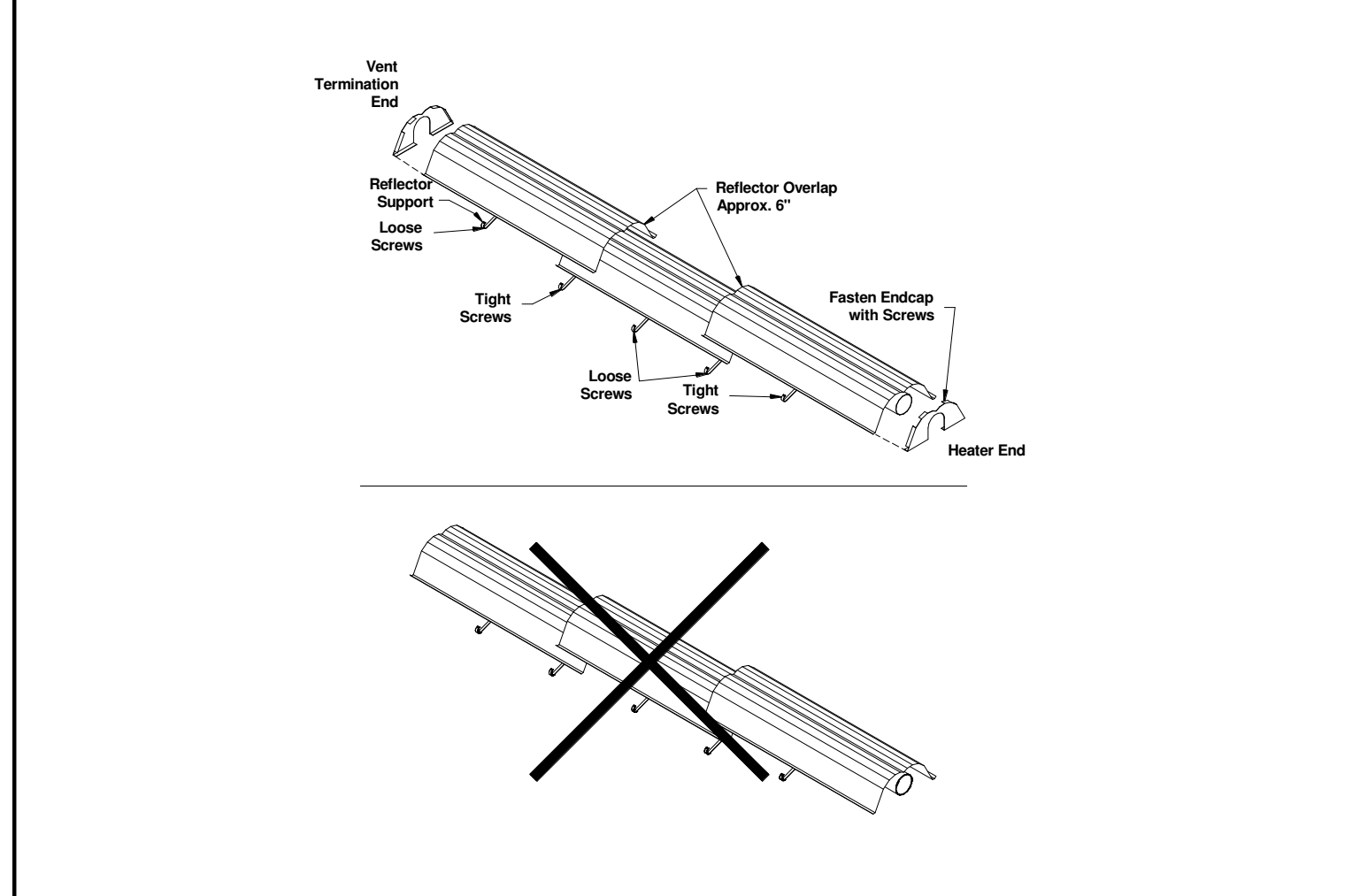
**F BURNER GASKET INSTALLATION** NO SCALE



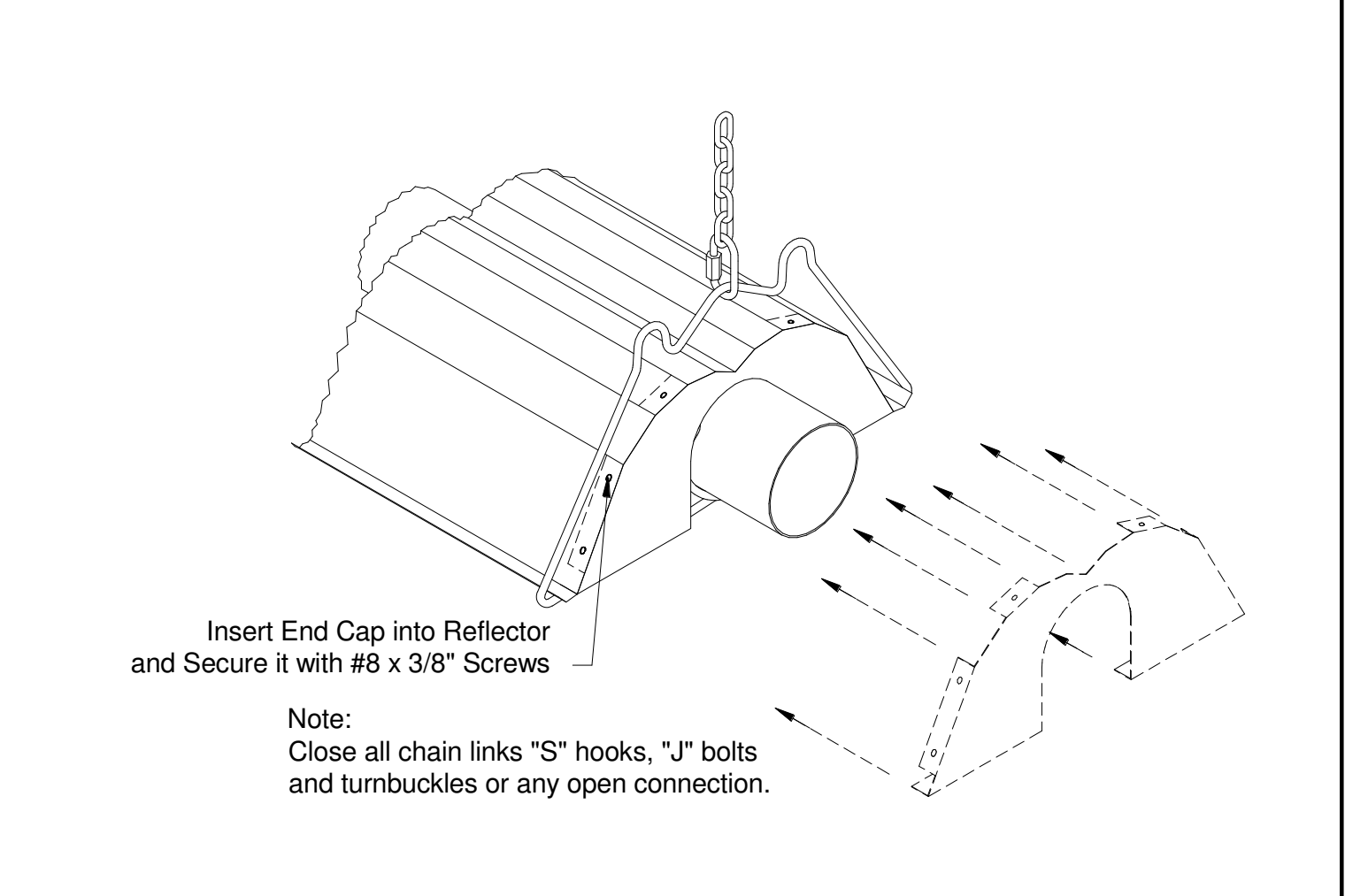
**G OVERALL TUBE ASSEMBLY** NO SCALE



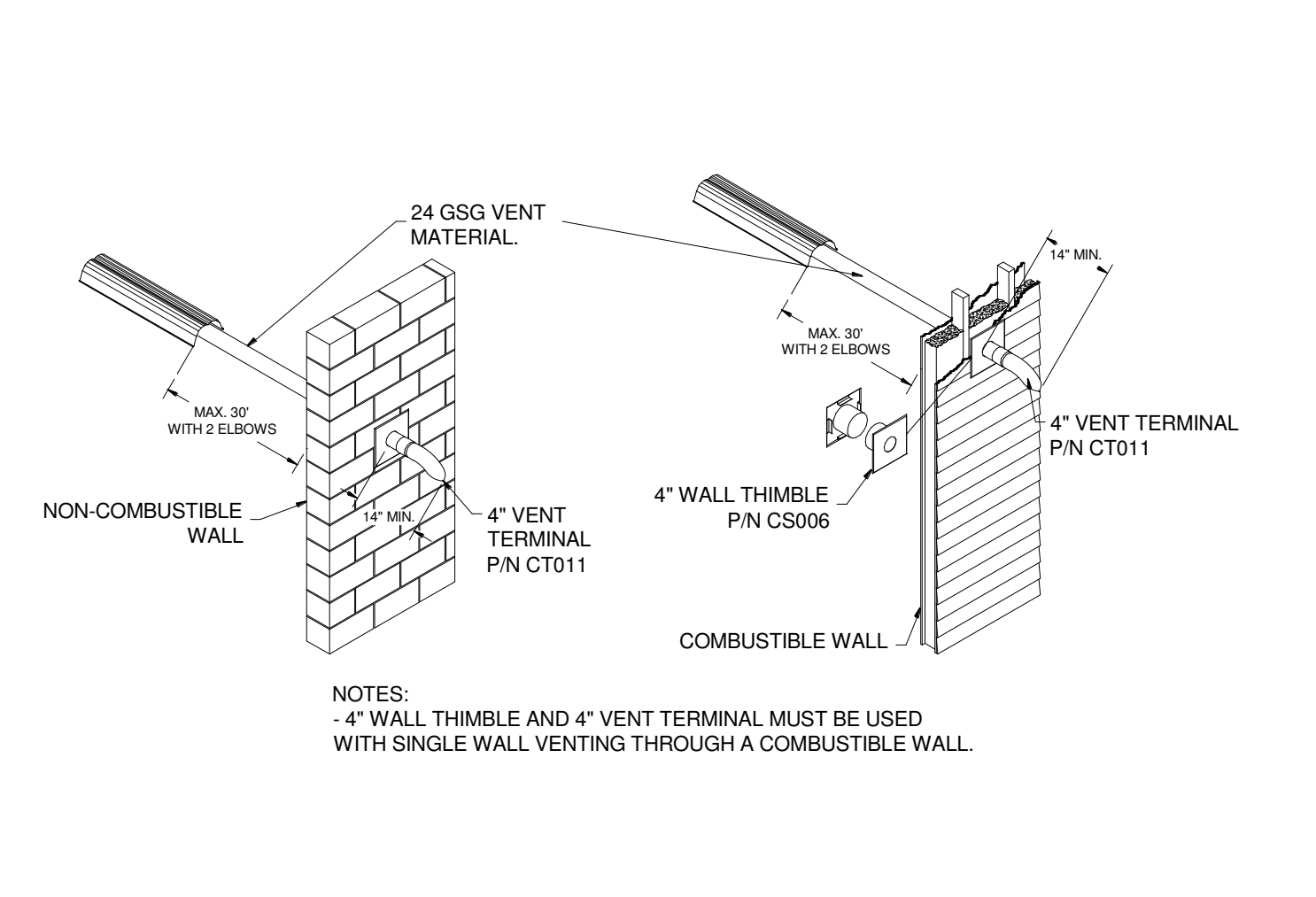
**H REFLECTOR AND BRACKET INSTALLATION** NO SCALE



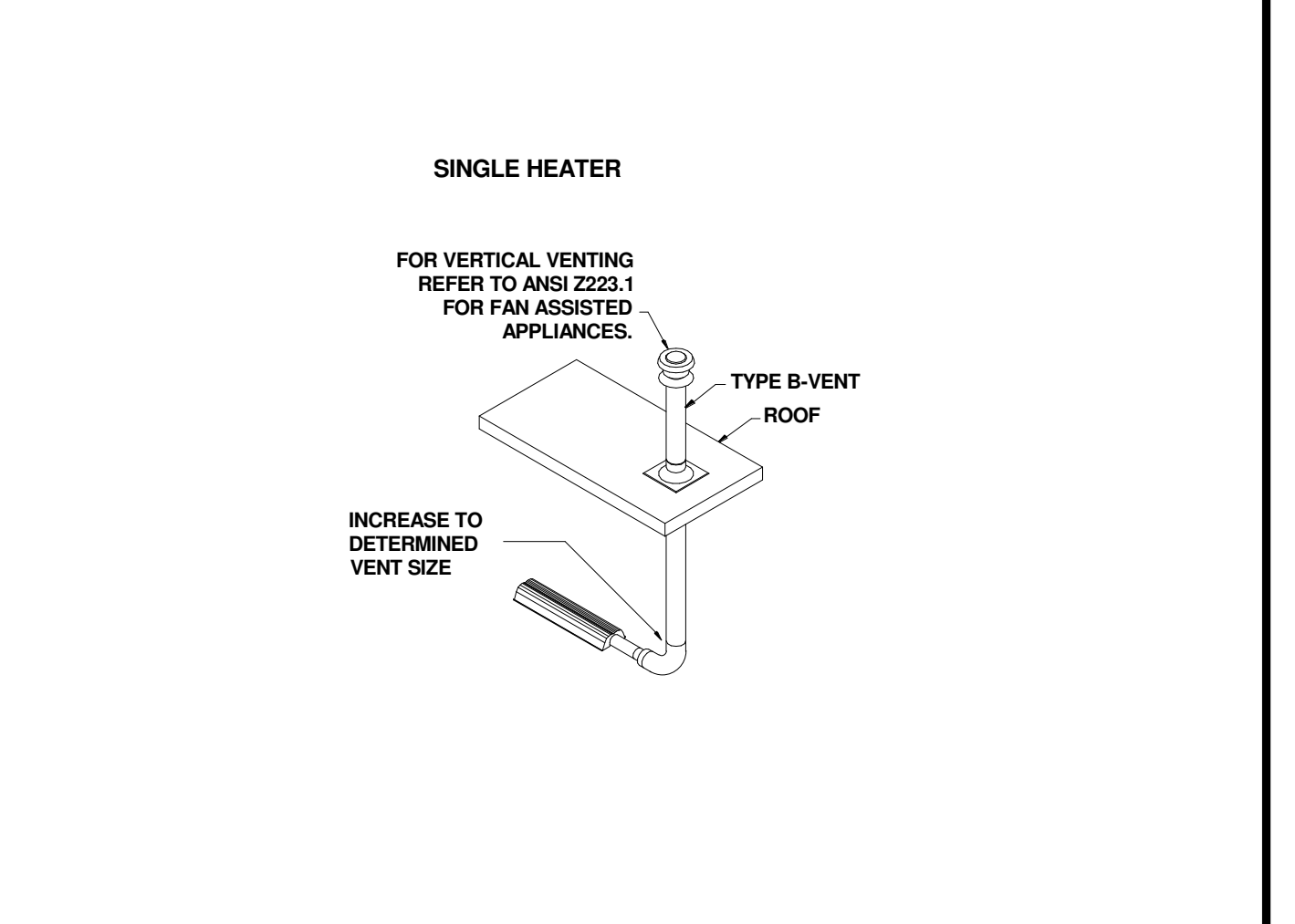
**J REFLECTOR OVERLAP INSTALLATION** NO SCALE



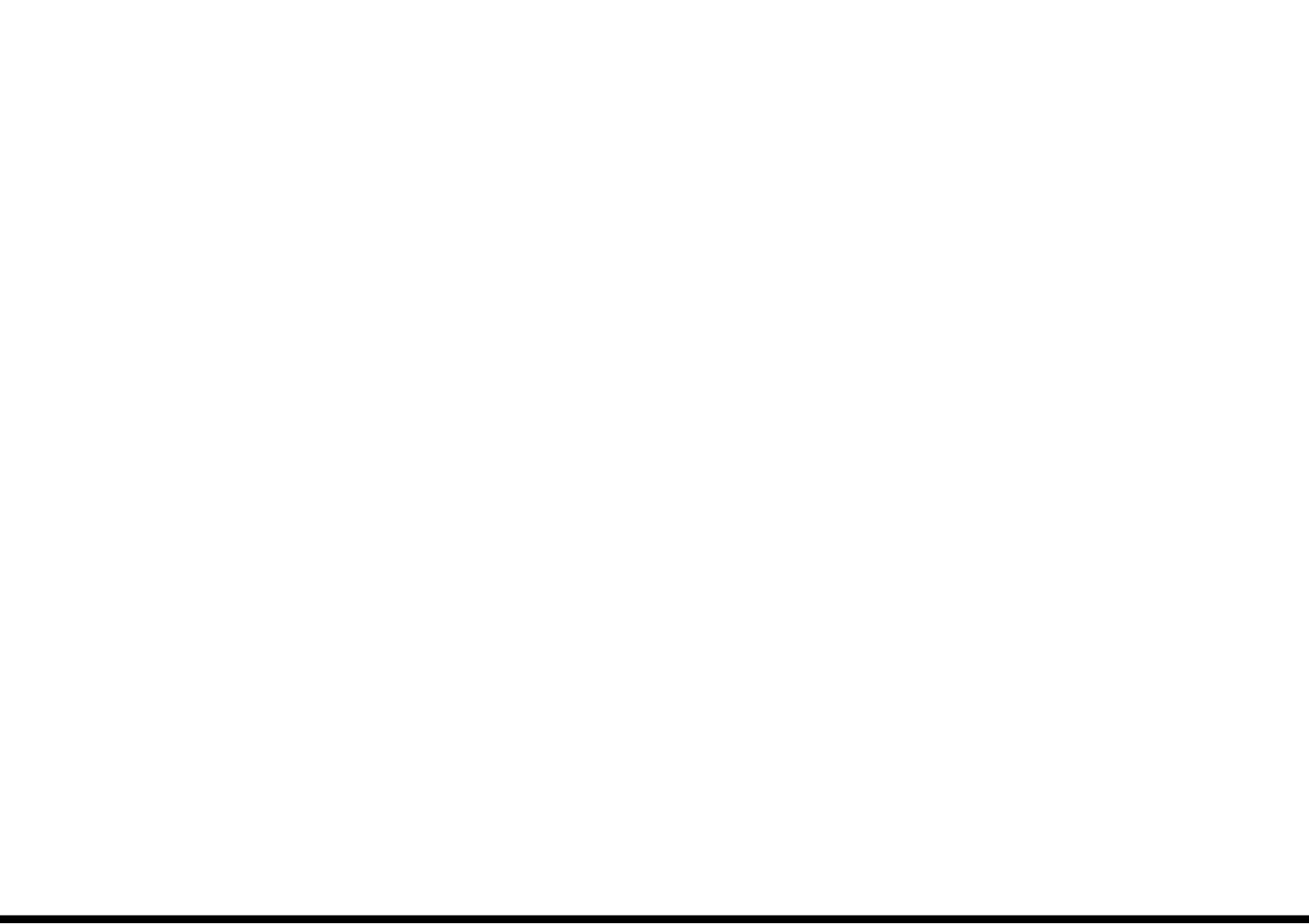
**K REFLECTOR END CAP INSTALLATION** NO SCALE



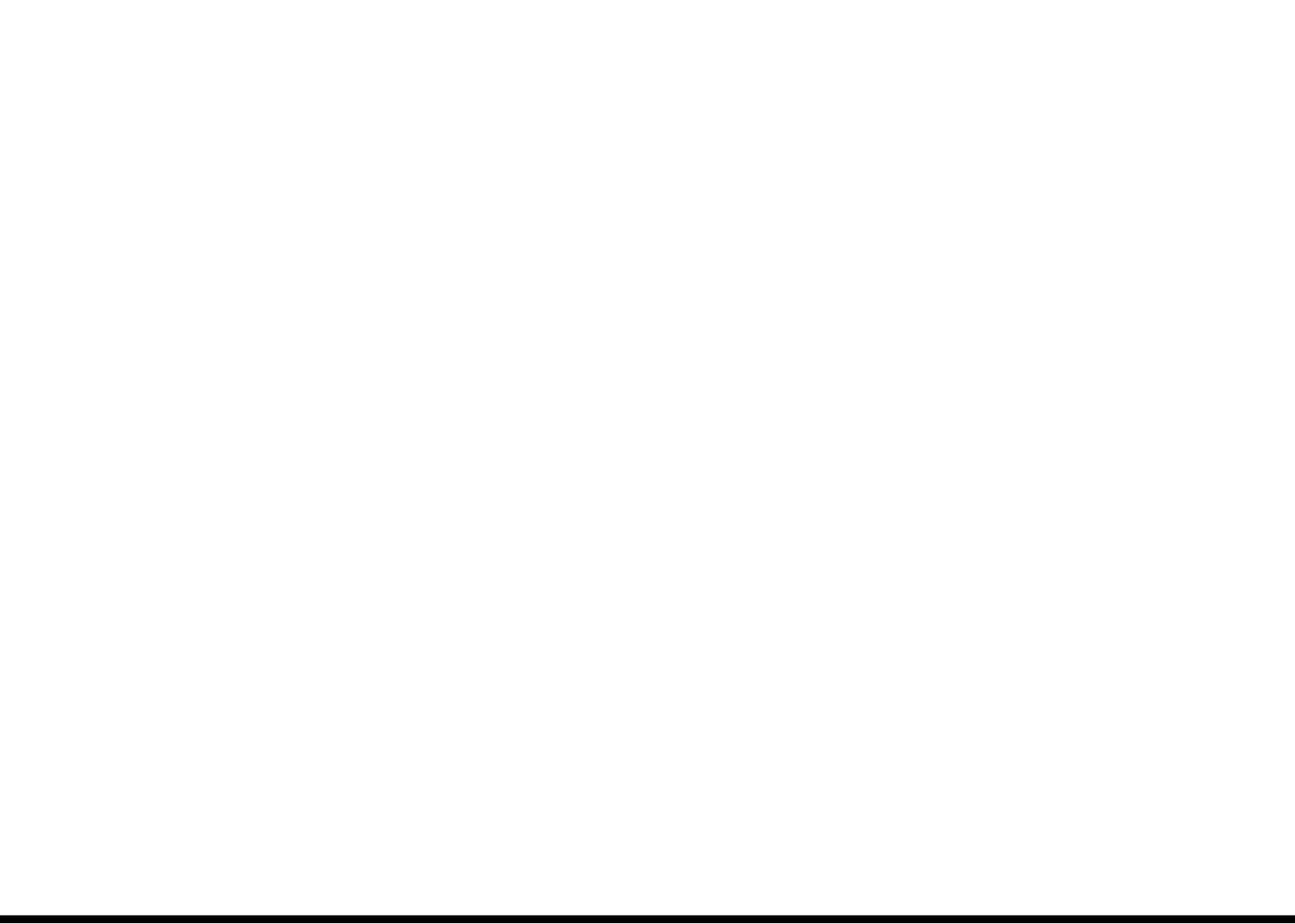
**L EXHAUST TERMINATION DETAIL** NO SCALE



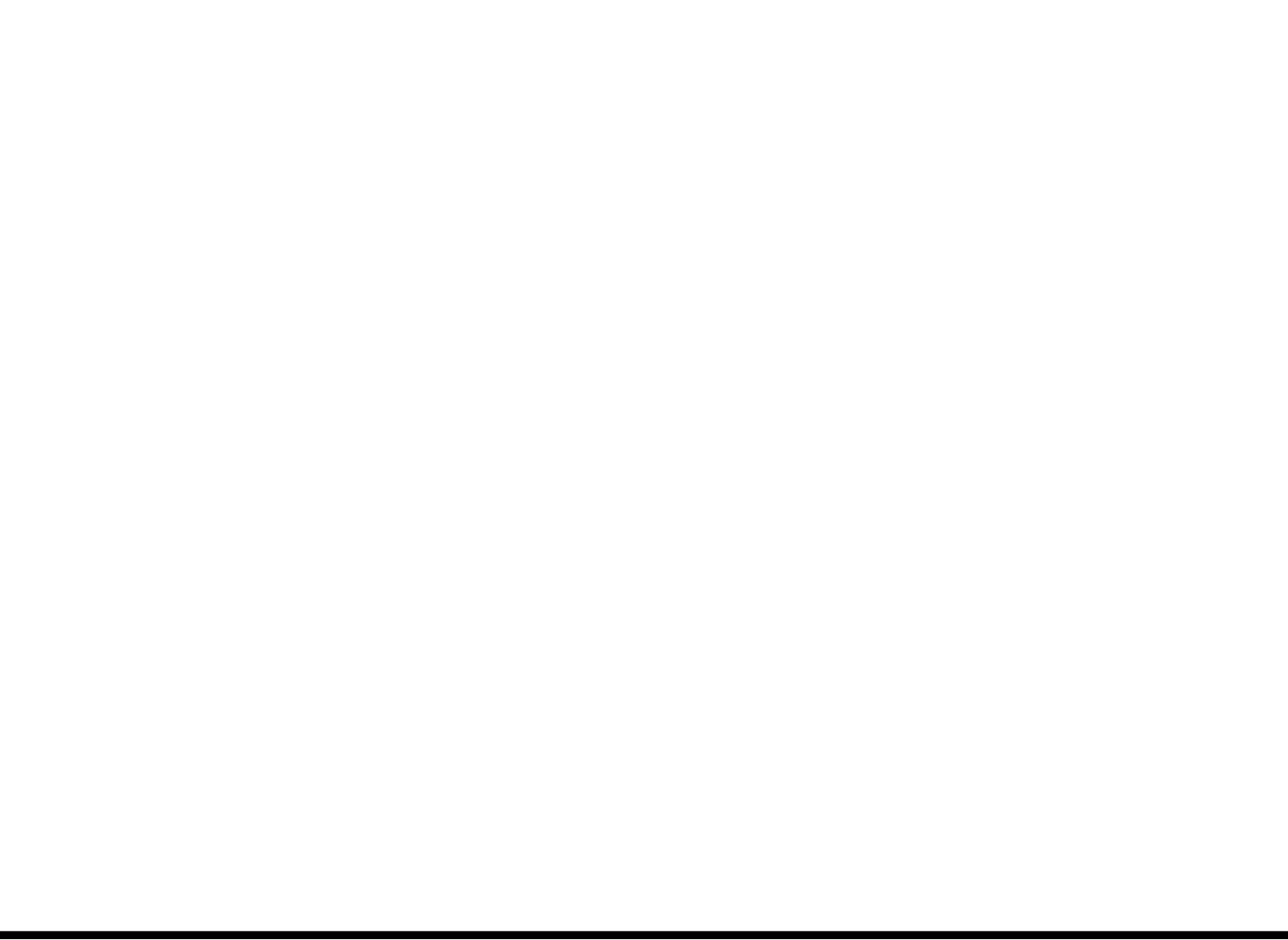
**M INTAKE VENT TERMINATION DETAIL** NO SCALE



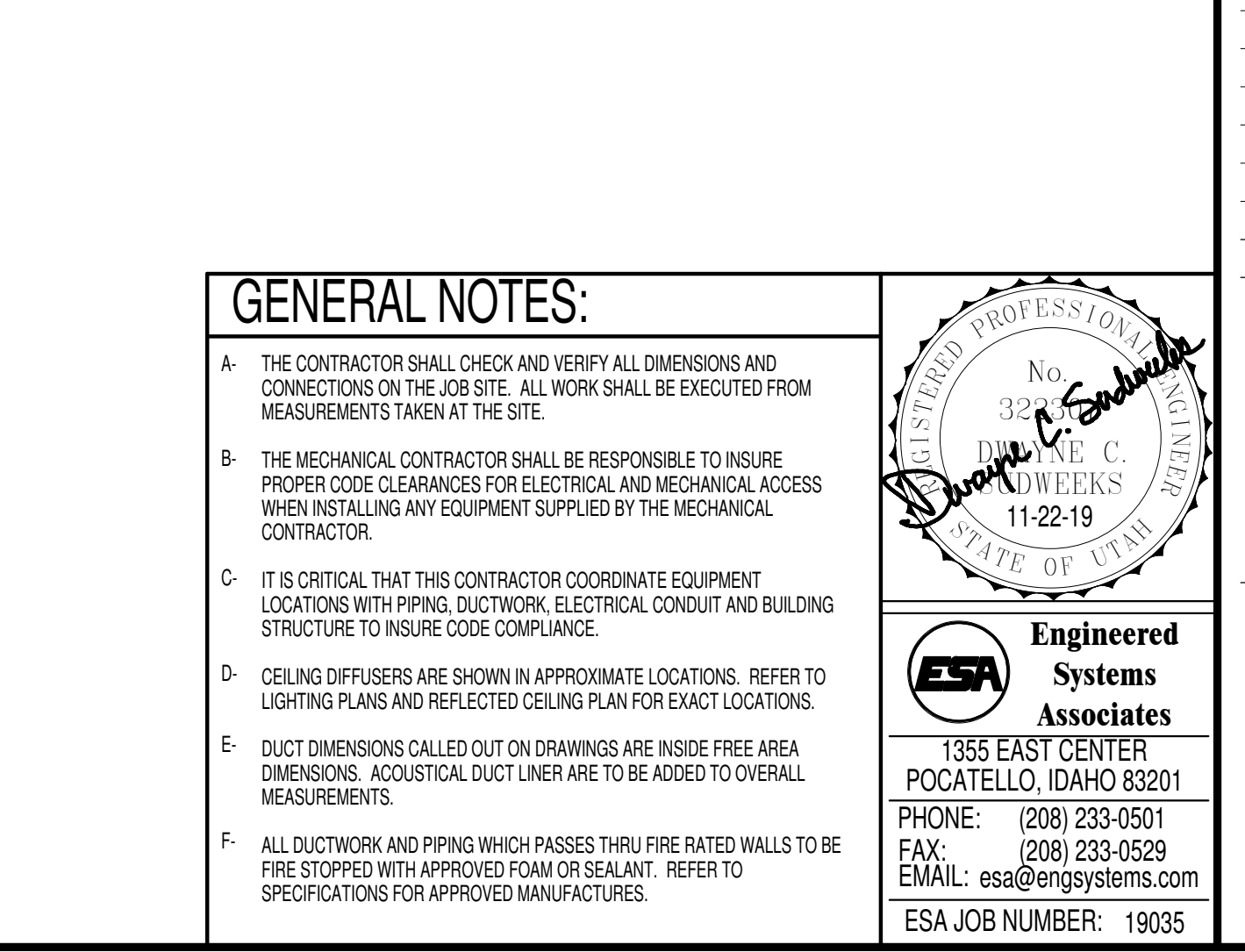
**N REFLECTOR OVERLAP INSTALLATION** NO SCALE



**O REFLECTOR END CAP INSTALLATION** NO SCALE



**P EXHAUST TERMINATION DETAIL** NO SCALE



**Q INTAKE VENT TERMINATION DETAIL** NO SCALE

**nw architects.p.a.**  
 ARCHITECTURE / PLANNING / INTERIORS  
 SCOTT L NELSON A.I.A. KEVIN R BODILY A.I.A. JAMES H WYATT A.I.A.  
 900 JOHN ANDERSON PARKWAY P.O. BOX 2312 - IDAHO FALLS, IDAHO 83402-2312  
 (208) 746-6279 (208) 746-6280 (208) 746-6281

**KENWORTH SALES COMPANY INC.**  
 1750 SOUTH 1350 WEST  
 NEW HAVEN, UTAH  
 PROJECT: A NEW BUILDING FOR:  
 SHEET TITLE: RADIANT HEATER SYSTEM DETAILS

**GENERAL NOTES:**

- A- THE CONTRACTOR SHALL CHECK AND VERIFY ALL DIMENSIONS AND CONNECTIONS ON THE JOB SITE. ALL WORK SHALL BE EXECUTED FROM MEASUREMENTS TAKEN AT THE SITE.
- B- THE MECHANICAL CONTRACTOR SHALL BE RESPONSIBLE TO INSURE PROPER CODE CLEARANCES FOR ELECTRICAL AND MECHANICAL ACCESS WHEN INSTALLING ANY EQUIPMENT SUPPLIED BY THE MECHANICAL CONTRACTOR.
- C- IT IS CRITICAL THAT THIS CONTRACTOR COORDINATE EQUIPMENT LOCATIONS WITH PIPING, DUCTWORK, ELECTRICAL CONDUIT AND BUILDING STRUCTURE TO INSURE CODE COMPLIANCE.
- D- CEILING DIFFUSERS ARE SHOWN IN APPROXIMATE LOCATIONS. REFER TO LIGHTING PLANS AND REFLECTED CEILING PLAN FOR EXACT LOCATIONS.
- E- DUCT DIMENSIONS CALLED OUT ON DRAWINGS ARE INSIDE FREE AREA DIMENSIONS. ACOUSTICAL DUCT LINER ARE TO BE ADDED TO OVERALL MEASUREMENTS.
- F- ALL DUCTWORK AND PIPING WHICH PASSES THRU FIRE RATED WALLS TO BE FIRE STOPPED WITH APPROVED FOAM OR SEALANT. REFER TO SPECIFICATIONS FOR APPROVED MANUFACTURERS.

**Engineered Systems Associates**  
 1355 EAST CENTER  
 POCATELLO, IDAHO 83201  
 PHONE: (208) 233-0501  
 FAX: (208) 233-0529  
 EMAIL: esa@engsystems.com  
 ESA JOB NUMBER: 19035

PROJECT NO. 16066  
 DATE: NOVEMBER 2019  
 DRAWN BY: M. Jensen  
 CHECKED BY: D. Sudweeks  
 DRAWING NO.: **M3.2**